

# CLASSIC SERIES CHILLER SYSTEM



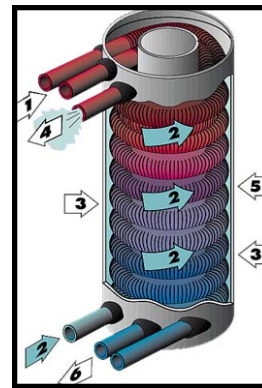
## Modular Chiller System

The Classic Series was designed for the retrofit market.

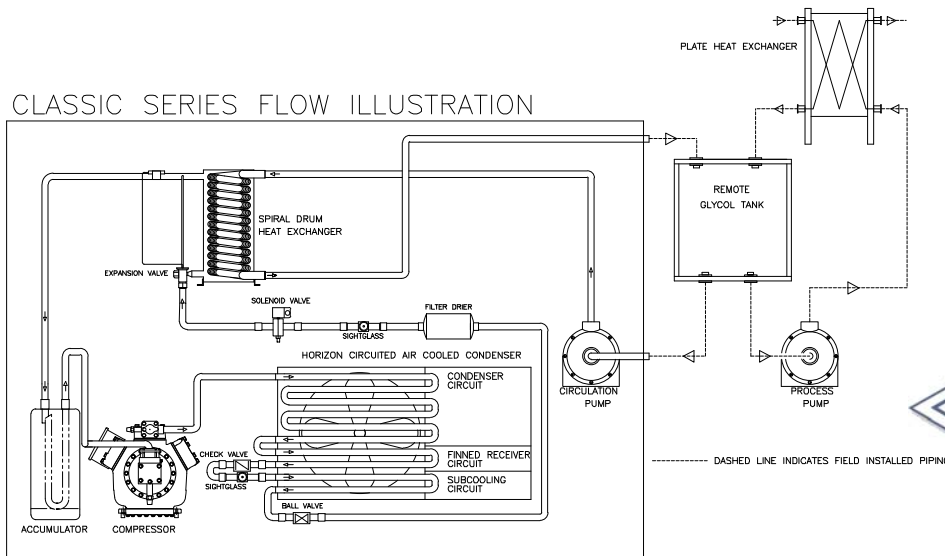
Utilizing the core components from our Packaged Chiller System, we developed a streamlined system without a Glycol Storage Tank and Glycol Process Pump.

The Classic Series is ideal when you need to replace or add capacity to any existing chiller system.

- **Large Size Range**– The Classic Series is offered in various sizes from 10 HP to 100 HP. Both Air Cooled or Water Cooled Models are available.
- **Spiral Drum Heat Exchanger**– Each model is supplied standard with the proven Spiral Drum Heat Exchanger.
- **Horizon™ Circuited Condenser**– 10 HP and larger supplied standard with our Horizon™ Circuited Condensers. The Finned Receiver and Subcooling Circuits deliver one of the most efficient condensers available.
- **CR110 Microprocessor Controller**– The optional CR110 Controller can be installed on each model. Independent Control Cards provide improved Compressor, Condenser, Evaporator, and Pump Control.



CLASSIC SERIES FLOW ILLUSTRATION



*When Keeping Cool is Everything™*  
Manufacturers and Suppliers of the Pro Chiller and Proformer Product Line.

Pro Refrigeration Inc.  
Tel: 253.735.9466 / 800.845.7781

P.O. Box 1528  
Fax: 253.735.2631

Auburn, WA 98071-1528  
[www.proformerproducts.com](http://www.proformerproducts.com)

CL SERIES CHILLER SYSTEMS  
10 HP TO 50 HP CLASSIC AIR COOLED WITH HORIZON CIRCUITRY

SINGLE COMPRESSOR SYSTEMS

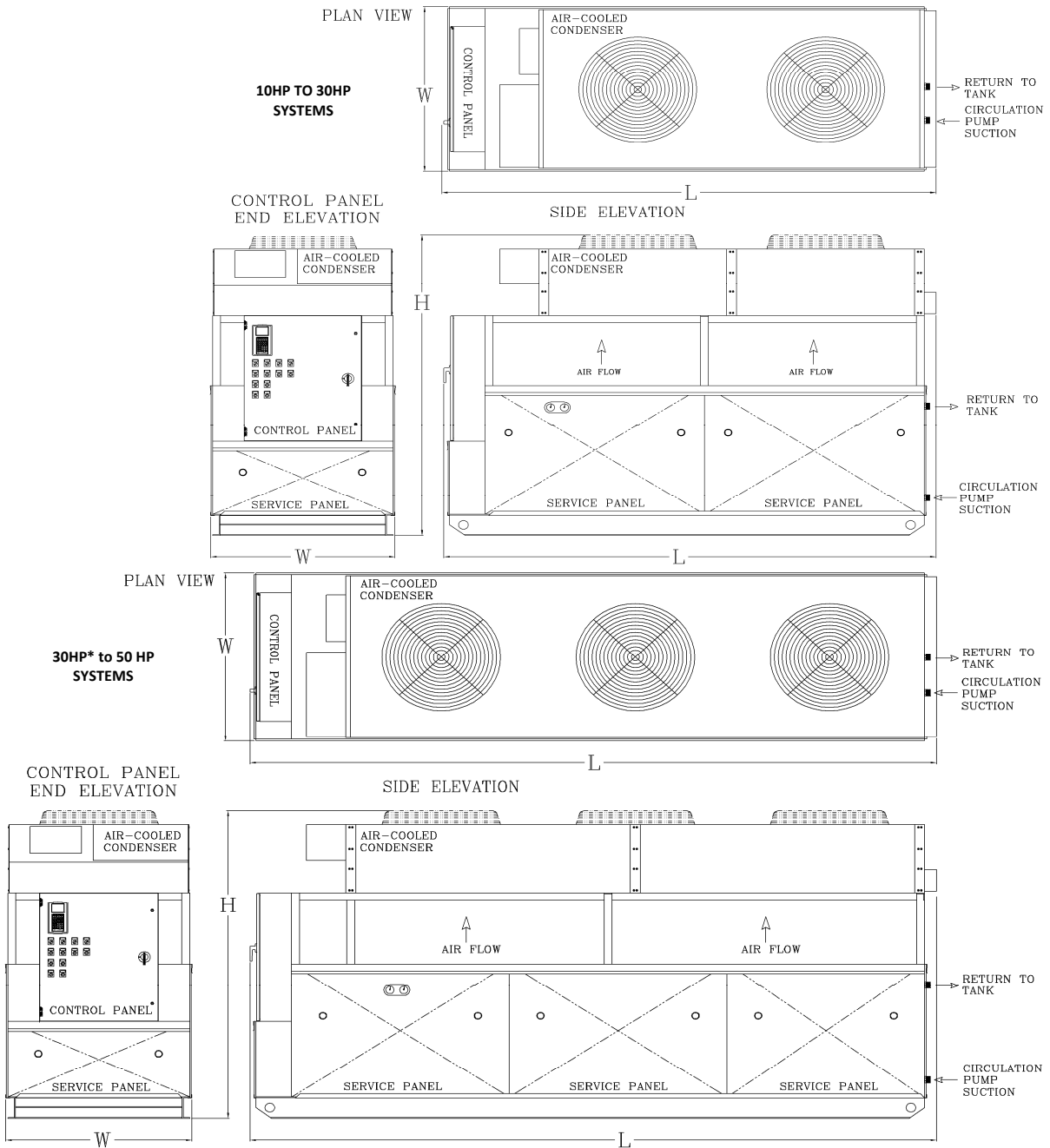
CLASSIC AIR COOLED CHILLER SYSTEMS	MODEL	CAPACITY		GLYCOL PUMP	DIMENSIONS L X W X H (INCHES)	MINIMUM CIRCUIT AMPACITY		CONNECTION SIZES
		28°F GLYCOL 110°F COND 10°F SUBCOOL	33°F GLYCOL 110°F COND 10°F SUBCOOL			208-230V/3PH/60HZ	460V/3PH/60HZ	
10 HP	PB110F3R4CL-A	75,900	86,400	2 HP	90 X 48 X 87	69 Amps	35 Amps	All Glycol Supply and Return Connections are 2 Inch
20 HP	PB120F5R4CL-A	127,400	145,000	2 HP	126 X 48 X 87	94 Amps	47 Amps	
30 HP	PB130F7R4CL-A	192,100	217,000	3 HP	131 X 48 X 87*	151 Amps	74 Amps	
40 HP	PB140F10R4CL-A	288,000	325,000	5 HP	175 X 48 X 87	221 Amps	111 Amps	
50 HP	PB150F14R4CL-A	341,000	386,000	5 HP	183 X 48 X 87	261 Amps	131 Amps	

\* USE 40HP DIMENSIONS FOR HIGH AMBIENT (3 FAN) SYSTEM

- CL SERIES SYSTEMS ARE SUPPLIED STANDARD WITH:
- GALVANIZED SERVICE PANELS
  - CONDENSER FAN MOTOR CONTACTORS AND PRESSURE SWITCHES (1 PER FAN)
  - HORIZON CIRCUITED CONDENSER
  - LIQUID LINE SOLENOID VALVE, SIGHTGLASS, AND FILTER DRIER
  - SPIRAL DRUM EVAPORATOR WITH TXVS
  - LOW PRESSURE FREEZE CONTROLS
  - ETL (UL 508) CONTROL PANEL WITH
    - ALL MOTOR STARTERS
    - COMPRESSOR CIRCUIT BREAKERS
    - CONTROL TRANSFORMER
    - ELECTRONIC TEMP CONTROL WITH DISPLAY



PRO REFRIGERATION INC  
PO BOX 1528  
AUBURN, WA 98071  
TEL: 253-735-9466  
TOLL FREE: 800-845-7781 FAX: 253-735-2631  
WWW.PROCHILLER.COM INFO@PROREFRIGERATION.COM



CL SERIES CHILLER SYSTEMS  
20 HP TO 100 HP CLASSIC AIR COOLED WITH HORIZON CIRCUITRY

DUAL COMPRESSOR SYSTEMS

MINIMUM CIRCUIT AMPACITY

CLASSIC AIR COOLED CHILLER SYSTEMS	MODEL	CAPACITY 28°F GLYCOL 110°F COND 10°F SUBCOOL	CAPACITY 33°F GLYCOL 110°F COND 10°F SUBCOOL	GLYCOL PUMP	DIMENSIONS L X W X H (INCHES)	208-230V/3PH/60HZ	460V/3PH/60HZ	CONNECTION SIZES
20 HP	PB210F6R4CL-A	151,800	172,800	2 EA 2 HP	90 X 94 X 87	126 Amps	63 Amps	All Glycol Supply and Return Connections are 2 Inch
40 HP	PB220F10R4CL-A	254,800	290,000	2 EA 2 HP	126 X 94 X 87	182 Amps	91 Amps	
60 HP	PB230F14R4CL-A	384,200	434,000	2 EA 3 HP	131 X 94 X 87*	265 Amps	130 Amps	
80 HP	PB240F20R4CL-A	576,000	650,000	2 EA 5 HP	175 X 94 X 87	405 Amps	203 Amps	
100 HP	PB250F28R4CL-A	682,000	772,000	2 EA 5 HP	183 X 94 X 87	477 Amps	238 Amps	

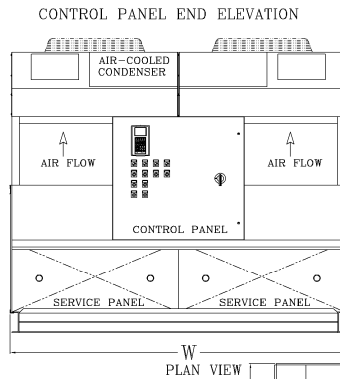
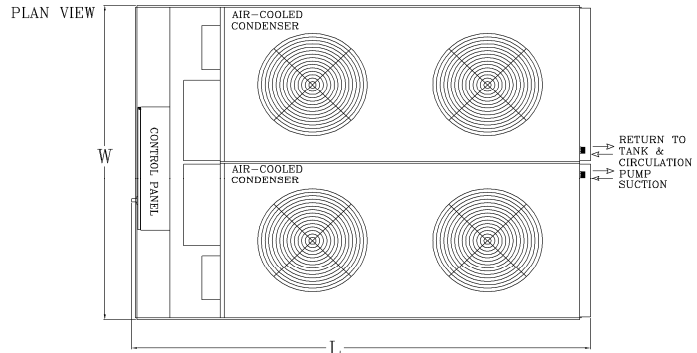
\*USE 80HP DIMENSIONS FOR HIGH AMBIENT (3 FAN) SYSTEM

- CLA SERIES SYSTEMS ARE SUPPLIED STANDARD WITH:
- GALVANIZED SERVICE PANELS
  - CONDENSER FAN MOTOR CONTACTORS AND PRESSURE SWITCHES (1 PER FAN)
  - HORIZON CIRCUITED CONDENSER
  - LIQUID LINE SOLENOID VALVE, SIGHTGLASS, AND FILTER DRIER
  - SPIRAL DRUM EVAPORATOR WITH TXV'S
  - LOW PRESSURE FREEZE CONTROLS
  - ETL (UL 508) CONTROL PANEL WITH:
    - ALL MOTOR STARTERS
    - COMPRESSOR CIRCUIT BREAKERS
    - CONTROL TRANSFORMER
    - ELECTRONIC TEMP CONTROL WITH



PRO REFRIGERATION INC  
PO BOX 1528  
AUBURN, WA 98071  
TEL: 253-735-9466  
TOLL FREE: 800-845-7781 FAX: 253-735-2631  
WWW.PROCHILLER.COM INFO@PROREFRIGERATION.COM

20 HP TO 60 HP SYSTEMS



60 HP\* TO 100 HP SYSTEMS

