

Pro ChilStar™ Micro Chiller System



The Perfect Chiller Solution

A compact Chiller System designed specifically for applications requiring chilled glycol in the range of 20°F to 35°F.



SUPPLIED WITH:

- REFRIGERANT **R404A**
- STAINLESS STEEL GLYCOL PUMP
- HIGHLY EFFICIENT SPIRAL DRUM EVAPORATOR WITH 60 MONTH REPLACEMENT WARRANTY
- 20 GAL INSULATED GLYCOL RESERVOIR
- ELECTRONIC TEMPERATURE CONTROL WITH TEMPERATURE DISPLAY
- GLYCOL FLOW INDICATOR
- REFRIGERANT PRESSURE GAUGES
- ALARM INDICATOR LIGHTS AND FUNCTION SWITCHES
- FACTORY TESTED AND SHIPPED WITH COMPLETE OPERATING REFRIGERANT CHARGE.
- OPTIONAL CASTER SET AND HOSE RACK FOR MOBILE APPLICATIONS

Available in 4 sizes:

PM102D1R420-A **2HP**

15,000 BTU/HR*

PM103D1R420-A **3HP**

20,000 BTU/HR*

PM105F1R420-A **5HP**

35,000 BTU/HR*

PM108F2R420-A **7.5HP**

54,000 BTU/HR*

* based on 27 F Glycol & 90 F Ambient



When Keeping Cool is Everything™
Manufacturers and Suppliers of the Pro Chiller and Proformer Product Line.

Pro Refrigeration Inc.
Tel: 253.735.9466 / 800.845.7781

P.O. Box 1528
Fax: 253.735.2631

Auburn, WA 98071-1528
www.proformerproducts.com

PRO CHILSTAR™ MICRO CHILLER SYSTEMS
2 HP TO 7.5 HP PACKAGED AIR COOLED

SUPPLIED WITH MANEUROP™ COMPRESSORS

MINIMUM CIRCUIT AMPACITY

CHILSTAR SYSTEM	MODEL	BTU/HR 27°F GLYCOL 90°F AMBIENT	GLYCOL PUMP	TANK CAPACITY (GAL)	DIMENSIONS L X W X H (INCHES)	SHIP WEIGHT (LBS)	230V 1PH 60HZ	208-230V 3PH 60HZ	460V 3PH 60HZ	GLYCOL FITTING CONNECTION SIZES
2 HP	PM102D1R420-A	15,000	1 HP	20 GAL	45 X 32.5 X 49	500 lbs.	33 Amps	21 Amps	9 Amps	1-1/4 IN
3 HP	PM103D1R420-A	20,000	1 HP	20 GAL	45 X 32.5 X 49	550 lbs.	41 Amps	24 Amps	11 Amps	1-1/4 IN
5 HP	PM105F1R420-A	35,000	1 HP	20 GAL	58 X 40.5 X 55	700 lbs.	58 Amps	34 Amps	16 Amps	1-1/4 IN
7.5 HP	PM108F2R420-A	54,000	1.5 HP	20 GAL	70.5 X 43.5 X 68	1150 lbs.	N/A	53 Amps	27 Amps	1-1/2 IN

SUPPLIED WITH COPELAND™ COMPRESSORS

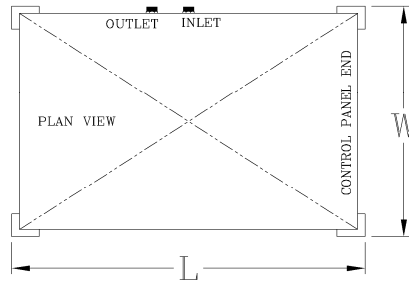
MINIMUM CIRCUIT AMPACITY

CHILSTAR SYSTEM	MODEL	BTU/HR 27°F GLYCOL 90°F AMBIENT	GLYCOL PUMP	TANK CAPACITY (GAL)	DIMENSIONS L X W X H (INCHES)	SHIP WEIGHT (LBS)	230V 1PH 60HZ	208-230V 3PH 60HZ	460V 3PH 60HZ	GLYCOL FITTING CONNECTION SIZES
2 HP	PE102D1R420-A	15,000	1 HP	20 GAL	45 X 32.5 X 49	500 lbs.	27 Amps	18 Amps	9 Amps	1-1/4 IN
3 HP	PE103D1R420-A	20,000	1 HP	20 GAL	45 X 32.5 X 49	550 lbs.	38 Amps	24 Amps	12 Amps	1-1/4 IN
5 HP	PE105F1R420-A	35,000	1 HP	20 GAL	58 X 40.5 X 55	700 lbs.	51 Amps	31 Amps	17 Amps	1-1/4 IN

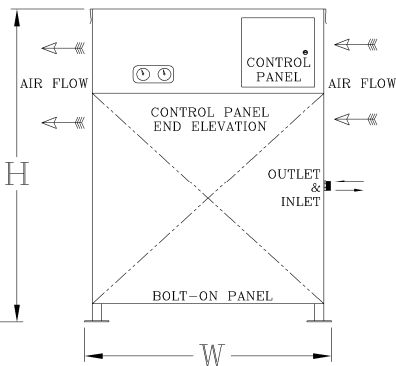
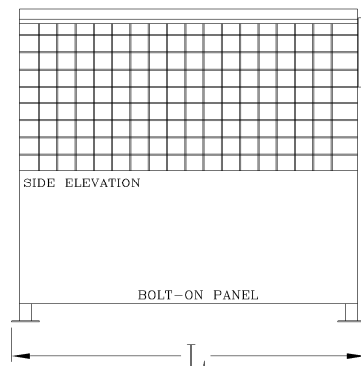
EACH OF THE CHILSTAR SYSTEMS IS DESIGNED WITH THE FOLLOWING STANDARD EQUIPMENT

- * R404A Refrigerant
- * Stainless Steel Glycol Pump
- * Highly Efficient Spiral Drum Evaporator with 60 MONTH Warranty
- * 20 Gallon Insulated Glycol Storage Reservoir
- * Electronic Temperature Control With Digital Display
- * Glycol Flow Indicator
- * Refrigerant Pressure Gauges
- * Alarm Indicator Lights & Function Switches
- * Factory Tested and Shipped With a Complete Refrigerant Charge
- * Optional Caster Set and Hose Rack Available for Mobile Applications

A COMPACT CHILLER SYSTEM
DESIGNED SPECIFICALLY FOR
APPLICATIONS REQUIRING CHILLED
GLYCOL IN THE RANGE OF 20°F to 35°F.



AVAILABLE IN 2HP, 3HP, 5HP, & 7.5HP MODELS



PRO REFRIGERATION INC
PO BOX 1528
AUBURN, WA 98071
WWW.PROCHILLER.COM



PHONE: 253-735-9466
TOLL FREE: 800-845-7781
FAX: 253-735-2631
INFO@PROREFRIGERATION.COM